

## WHO WE ARE

**Madison Park Development Corporation's** community center, The Dewitt Center, opened its doors in Madison Park Village in July 2018 to serve as a **welcoming home** for many MPDC programs for people of **all ages**.

The Dewitt Center features daily programs & classes including **financial literacy, workforce development, Zumba, knitting, after-school youth development**, and much more.

The Dewitt Center also features a **state-of-the-art technology lab**, a **summer camp**, and health & wellness programs including **sports & fitness activities in the gym**.

The Dewitt Center is also home to an array of **arts activities** with art classes, events, and a **gallery featuring** exhibitions by **Roxbury artists**.

Come visit us and learn more!

## HOURS OF OPERATION

Monday-Friday: 10:00 am-8:00 pm

Saturday: 10:00 am-6:00 pm

Sunday: Closed

## CONTACT US



edavis@madison-park.org



<http://bit.ly/DewittCenter>



**The Dewitt Center**  
122 Dewitt Drive  
Roxbury, MA 02110  
617.275.7080



# The Dewitt Center

## Spring 2019

## Catalog

### February - April



[madison-park.org](http://madison-park.org)



## ABOUT MPDC

At **Madison Park Development Corporation**, we are building healthy communities. **MPDC** is a leading developer of **affordable housing** and one of the largest community development corporations in Massachusetts. We take a multi-dimensional approach to community development by offering **impactful programming for youth development, health and community wellness, public safety, resident leadership, civic engagement, and arts & culture.**

**Our mission** today remains true to our history—to **foster a vibrant, healthy Roxbury** neighborhood that **supports the well-being and advancement of the community.**

### The Dewitt Center is for all ages!



**School Aged Children  
(5-13)**



**Youth/Teens  
(13-20)**



**Adults  
(21+)**



**Seniors  
(60+)**

## PHOTOS FROM FALL & WINTER 2018/19 @ THE DEWITT CENTER





# SOL ARTS SPRING 2019 UPCOMING PERFORMANCES



@ Hibernian Hall



**SHE PERSISTED CONCERT  
- BOSTON CHILDREN'S CHORUS -  
FEBRUARY 28, 2019**

**RESIST (D)ANCE  
- RADICAL BLACK GIRL -  
MARCH 18 - MARCH 24, 2019**

**PLAY READING SERIES  
- FRONT PORCH COLLECTIVE -  
MAY 7 - MAY 28, 2019**

**I AM A MAN 2019  
MIXED MEDIA EVENTS  
- CASTLE OF OUR SKINS -  
JUNE 1 - JUNE 8, 2019**

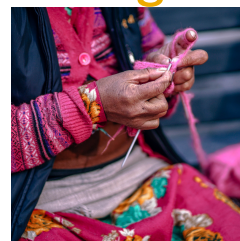
For more information contact D. Farai Williams  
fwilliams@madison-park.org / 617.849.6322  
or visit <http://bit.ly/HibernianHall>

#ItsHappeningAtHibernian



## ART PROGRAMS

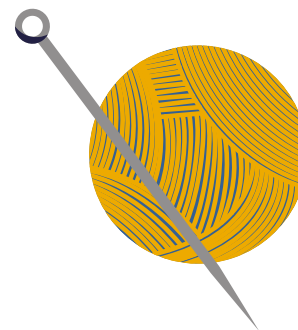
### Knitting with Amy



Learn the basics of knitting: casting on and off, choosing needles and yarns, knit and purl stitches, and how to read a pattern. Build skills quickly as you complete at least one project, a wallet or a multi-colored hat.

**Age Range:** Seniors

Tuesdays 10:00am - 12:00pm



### Boston Pulse Poetry



Boston Pulse is an in school and after school identity-affirming arts and literacy program. They aim to empower youth through spoken word poetry and public speaking.

**Age Range:** 12-19

Thursdays 6:00pm - 8:00pm

Fridays 3:00pm - 6:00pm





# HEALTH, WELLNESS, & SPORTS PROGRAMS

## Awaken Christian Church Health & Wellness Program

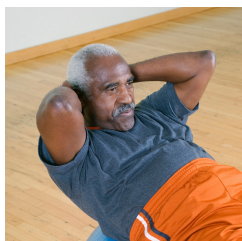


This program is designed to help prepare, provide and demonstrate sound mental health, body, and spirit to transform individual lives and transform inner-city communities.

**Age Range:** Adults

Monthly on 2/2, 3/9, 4/6, 5/18, 6/9 11:00am - 1:00pm

## Fitness with Allison



These exercise classes are designed to help seniors and older adults maintain their cardiovascular health, strength & flexibility. Whether you're a veteran gym member or a newcomer, Allison welcomes you to come to enjoy the benefits of working out together.

**Age Range:** Seniors

Wednesdays 1:00pm - 2:00pm

## Wellness Way Women's Basketball



Wellness Way

Wellness Way aims to empower Muslim and other community members to make healthier choices and improve their overall wellness through fun & interactive programs. Join them on the weekends for women's basketball. Beginners welcome!

**Age Range:** 18+

Saturdays 4:30pm - 6:00pm (1/12, 1/26, 2/9, 2/23)



## Hiring interns in 2019?

## Host MPDC youth to work at your site!

Over 70 MPDC youth employed by  
local businesses in 2018!

MPDC's Youth Development Programs prepare youth  
to be self-sufficient, professional, and confident.

MPDC youth work alongside our staff and our  
employer partners to learn the "hard" and "soft" skills  
necessary to succeed in the workforce.

## Become an employer partner today!



For more information  
contact Yhinny Matos

[ymatos@madison-park.org](mailto:ymatos@madison-park.org)

617.849.6236

[madison-park.org](http://madison-park.org)



## HOLIDAY SCHEDULE @ THE DEWITT CENTER

The Dewitt Center will be closed on the following dates:

President's Day  
**Monday, February 18, 2019**

&

Patriots Day  
**Monday, April 15, 2019**

## Stay connected!

Follow the Dewitt Center on Facebook & Instagram (@TheDewittCenter) and be sure to check out MPDC's Facebook, Twitter, Instagram & website for up to date information on classes and events.



#DoltAtTheDewitt  
#MPDCRox

## HEALTH, WELLNESS, & SPORTS PROGRAMS

### One Love Sports Academy



One Love Sports Academy focuses on improving the quality of life for youth ages 7 to 16. Growth development is their number one goal! They achieve this by focusing on sports, trainings, and curriculum.

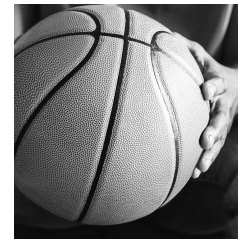
**Age Range:** 7-16

Six-week session starting January 22

Tuesdays 6:00 - 8:00pm (Grades 6-8)

Wednesdays 6:00 - 8:00pm (Grades 3-5)

### Collective Impact Open Gym



Join the Collective Impact as they work to build a co-ed 3-on-3 basketball league in Roxbury.

**Age Range:** 12+

Every first & third Saturday 3:30pm - 6:00pm

### Citi Fit Zumba



A fun, engaging, and dynamic workout class. New and old hit music to get up and dance to. A class so fun by the time you realize it's a workout, it's over.

\$7/Day - \$12/Week - \$40/Month

Smoothies sold in class for \$3

**Age Range:** 15+

Mondays 6:15pm - 7:45pm

Saturdays 1:30pm - 3:30pm



# HEALTH, WELLNESS, & SPORTS PROGRAMS

## Temple of Martial Arts



The temple of Martial Arts focuses on the training and work with parents and teachers to build a strong character of our at-risk youth. We mentor young men on anti-bullying, anti-violence, and anti-misogyny. Classes are \$40 per month for non-MPDC residents.

**Age Range:** 7 - 17

Mondays 6:30pm - 7:45pm

Saturdays 2:00pm - 3:30pm



## Women's Self Defense Class



The goal of this course is to bring families together by mentoring and building safety in the community through martial arts.

Madison Park residents free of charge. Non-residents fee: \$10/class

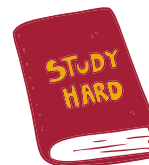
All students must purchase a Sidagoo uniform t-shirt for \$30.

**Age Range:** 16 - 61

**5** Thursdays beginning February 21 6:00pm - 7:30pm



Now accepting applications for **MPDC's FREE HiSet (GED) training program!**



**Looking for a fresh start?**  
**Not in school, unemployed?**  
**Need your HiSET/GED diploma?**  
Training and jobs are available for  
out of school youth ages 16-24



Scholarships intended for high school seniors or MPDC participants graduating in Spring/Summer 2019 who have been accepted into a college or are pursuing post-secondary education, degree, certification, trade or participating in training programs.

**MPDC's next HiSet orientations will be held on**  
**Wednesday, February 13, 2019 - 4:30pm - 6:30pm**  
**OR**

**Tuesday, February 19, 2019 - 11:00am - 2:00pm**

**Our next HiSet session begins on**  
**Monday, February 25, 2019.**



**For more information**  
**contact Yhinny Matos**

[ymatos@madison-park.org](mailto:ymatos@madison-park.org)

617.849.6236  
[madison-park.org](http://madison-park.org)



## TEEN PROGRAMS

The teen center, named **"The Zone"** by the Dewitt Center youth, is a place where teens can come together and **use the center's resources, play games, and meet new people.** Using the Dewitt Center as a hub, teens can explore new interests and have a good time.



Teens are invited to join us for movie night! Make recommendations and watch the latest movies at 'The Zone.'



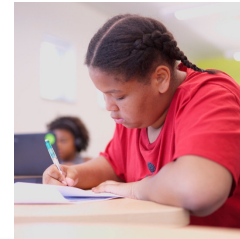
Teens are welcome to play games such as Fifa 18, NBA 2K, NFL, Grand Turismo, and Fortnite on the Dewitt Center's Playstation console.



Teens can enjoy playing & working on the computers at the Dewitt Center or just hang out with their friends online!

## COMMUNITY EDUCATION PROGRAMS

### EV Kids



EV Kids empowers Boston youth with the skills and confidence to succeed in school and life through its tutoring programs. They build a community of support with college volunteer tutors who provide multi-year after school 1-on-1 academic mentoring while professional staff provide school advocacy and family engagement.

**Age Range:** 9 - 18

Tuesdays, Wednesdays, Thursdays 4:00pm - 6:15pm



### Francis O'Bryant Mentorship Program



The FOB Mentorship Program's goal is to build positive, authentic, and lasting relationships and become positive rolemodels to the youth they serve while assisting and supporting them as they navigate and transition successfully from becoming boys to men.

**Age Range:** 8 - 18

Saturdays 10:00am - 1:00pm

## COMMUNITY EDUCATION PROGRAMS

### LIPGLOSS! (Ladies Involved in Protecting Girls Lives On Serious Subjects)



LIPGLOSS! works with females ages 11 - 15 to help them to become empowered young ladies with the necessary tools to be strong, productive leaders in their communities.

**Age Range:** 11 - 15

Saturdays 11:00am - 1:00pm

### Dream Program



The Dream Program pairs participants with passionate and energetic college students from Northeastern University. Currently, 28 MPDC residents are paired with a Northeastern mentor whom they build lasting relationships with.

**This program is for Madison Park Village residents only.**

To register contact Melissa at [mmaharaj@dreamprogram.org](mailto:mmaharaj@dreamprogram.org).

Fridays 2/1, 2/15, 3/1, 3/15, 4/5

Are you a teen living in Madison Park Village?

**Don't miss out on Teen Night!**

**Every last Friday of the month**

**5:00pm - 8:00pm**

Teens of MPV ages 12 - 18 years old get together for

**food, socializing, games, and fun!**

Residents of Madison Park Village only. In order to attend, teens' parents/guardians must submit their

Teen Night form to

Marcus @ 617-238-2313 or Etai @ 617-427-9242.





## Timothy Smith Network Technology Lab @ The Dewitt Center

The Timothy Smith Network, in partnership with various community organizations provides, **comprehensive technology education services to residents of the greater Roxbury community**. These organizations are located in a variety of social service agencies, health centers, community development corporations, standalone community technology centers, and faith-based organizations throughout the Greater Roxbury area.

**People of all ages** have access to **state of the art computer technology and to programs** as rich in diversity as the neighborhood the network serves. These programs build the capacity of the people of Roxbury as they acquire the knowledge and skills critical to success in our increasingly technology-driven world.

For more information or to register for a Timothy Smith Network course at The Dewitt Center contact  
Leah Samura, Program Manager  
Lsamura@timothysmithnetwork.org 617.708.1444



## ELLIS @The Dewitt Center

The Ellis works to strengthen Boston's inner-city working families with high-quality education and care for children, youth, and vulnerable adults. The goal of the programs at the Ellis is to **engage, educate, and empower**.

**Age Range: 5-13**

**Monday - Friday 2:00pm - 6:00 pm**

### ELLIS includes...

- Breakfast, lunch, and snack provided daily
- Field trips to museums, parks, pools, beaches, libraries, and much more!
- Partnerships with Haley House, Tenacity, Einc, and South End Library
- Enrichment opportunities including dance, cooking, STEM projects, visual arts, and sports and fitness

The cost for MPDC residents is \$50 - \$75 a week based on income and household size.

Non-resident: \$125 / week.

The Ellis Memorial also accepts vouchers.

**For more information contact:**

**Meisha Reece, [meishareece@ellismemorial.org](mailto:meishareece@ellismemorial.org)  
617.426.2900**



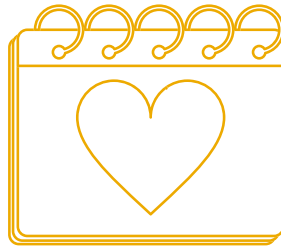
## SPECIAL EVENTS @ The Dewitt Center

### Islamic Multi-Service Organization Monthly Food Pantry

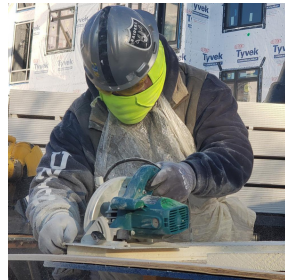


Rice, beans, canned goods, fruit, spaghetti sauce, and more available at the pantry. Come early as supplies are limited. Everybody is welcome!

**3rd Saturday of every month**  
**10:00am - 1:00pm**



### MPDC 4th Annual Community Job Fair



New year, new career!  
Meet with employers from construction, building trades, hospitality, the non-profit sector, & other exciting career fields.  
To register, please, contact Katrina Gwyn-Conrad at [kconrad@madison-park.org](mailto:kconrad@madison-park.org) or 617.849.6226

**Wednesday, February 6, 2019**  
**2:00pm - 6:00pm**

## Timothy Smith Network Technology Lab @ The Dewitt Center OPEN ACCESS SCHEDULE

### January 1 - 31

**Monday** 1pm - 8pm  
**Tuesday** 10am - 6pm  
**Wednesday** 10am - 6pm (1/2 - 1/6)  
10am - 4:30pm (1/23)  
12:30pm - 4:30pm (1/30)  
6pm - 8pm (1/30)  
**Thursday** 10am - 5pm  
**Friday** 10am - 8pm  
**Saturday** 12pm - 5pm

### February 1 - 28

**Monday** 1pm - 8pm  
**Tuesday** 10am - 5pm (2/5 - 2/19)  
**Wednesday** 12:30pm - 4:30pm  
6pm - 8pm  
**Thursday** 10am - 5pm (2/7 - 2/21)  
3pm - 5pm (2/28)  
**Friday** 10am - 8pm  
**Saturday** 12pm - 5pm (2/2 - 2/16)  
12pm - 1pm (2/23)  
3pm - 5pm (2/23)

### March 1 - 31

**Monday** 1pm - 8pm  
**Tuesday** 10am - 4pm (3/26)  
**Wednesday** 12:30pm - 4:30pm (3/6 - 3/20)  
6pm - 8pm (3/6 - 3/20)  
10am - 8pm (3/28)  
**Thursday** 3pm - 5pm (3/7 - 3/21)  
10am - 5pm (3/28)  
**Friday** 10am - 8pm  
**Saturday** 12pm - 5pm  
3pm - 5pm

### April 1 - 30

**Monday** 1pm - 8pm  
**Tuesday** 10am - 4pm (4/30)  
**Wednesday** 10am - 8pm  
**Thursday** 3pm - 5pm  
**Friday** 10am - 8pm  
**Saturday** 12pm - 1pm (4/6 - 4/13)  
3pm - 5pm (4/6 - 4/13)  
12pm - 5pm (4/20 - 4/27)



# Timothy Smith Network Technology Lab @ The Dewitt Center

**VIBRANT** January 7 - April 28  
Assistive Technology Mon. 10:00am - 1:00pm

**LEGO Robotics** January 15 - April 9  
Middle School Tues. 6:00pm - 7:30pm

**Virtual Reality Experience** January 17 - April 17  
Thurs. 5:00pm - 7:00pm

**Youth AstroNets** January 23 - March 20  
Middle School Weds. 4:30pm - 6:00pm

**Android & Basic Computers** January 30 - March 20  
Senior Edition Weds. 10:30am - 12:30pm

**Tech Goes Home** February 23 - April 13  
Small Business Sat. 1:00pm - 3:00pm

**Introduction to MS Word 2016** February 26 - March 21  
Tues. & Thurs. 1:00pm - 3:00pm

**Boston Design Academy** February 26 - May 7  
Tues. 4:00pm - 5:30pm

**Introduction to MS Excel 2016** April 2 - April 25  
Tues. & Thurs. 1:00pm - 3:00pm

## SPECIAL EVENTS @ The Dewitt Center

### Teen Young Professional Networking Mixer



Join the Peer Leadership Institute for a fun evening of mixing & networking with peer leaders. This is an opportunity to meet & share experiences and resources with young people as they plan their future. Refreshments will be served.

**Age Range: 14 - 17**

**Friday, February 22, 2019**

**4:00pm - 7:00pm**

Be sure to check [madison-park.org](http://madison-park.org) for up-to-date events and activities happening at The Dewitt Center!

### Movie Night



Watch 'The Great Debaters' in honor of Black History Month. Enjoy popcorn & refreshments! All ages welcome.

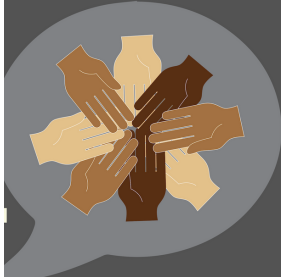
**Friday, February 22, 2019**

**5:30pm - 8:00pm**

**13 Space is limited - Registration is required**

## SPECIAL EVENTS @ The Dewitt Center

### Share Out & Community Discussion



Learn about the progress of the Neighborhood Trauma Teams and gather to give community feedback so that they can better serve you. Together we can make a difference! Dinner will be served.

**Wednesday, February 27, 2019**

**5:30pm - 8:00pm**

### Boston Pulse Poetry Black History Month



Join Boston Pulse Poetry for free food, great vibes, and, of course, poetry!

21+

\$5 entry

**Thursday, February 28, 2019**

**5:30pm - 8:00pm**

### Dewitt Center Gallery Opening



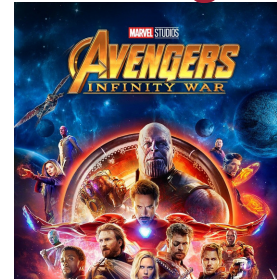
Learn all about the showcase of beautiful Roxbury art and photography at The Dewitt Center! This free event will feature conversations with the artists, refreshments, and guided tours of the art displayed throughout the center.

**Thursday, March 28, 2019**

**6:30pm - 8:30pm**

## SPECIAL EVENTS @ The Dewitt Center

### Movie Night



Watch 'The Avengers: Infinity War.' Enjoy popcorn & refreshments! All ages welcome.

**Friday, April 19, 2019**

**5:30pm - 8:00pm**

### Men of Color Wellness Summit



Join the Male Engagement Network (MEN) for their Men of Color Wellness Summit. This event is to raise awareness in black and brown communities about mental health; as it pertains to men of color.

**Saturday, April 27, 2019**

**11:00am - 3:00pm**

### Annual MPV Mother's Day Dinner Celebration



Annual MPV Mother's Day Dinner Celebration for residents of Haynes House, Smith House, Madison Park III, Madison Park IV, Beryl Gardens, Ruggles Shawmut, Dudley Greenville, 9 Williams Street, and St. Botolph only.

Please RSVP by calling Marcus @ 617-238-2313 or Etai @ 617-427-9242

**Thursday, May 23, 2019**

**6:00pm - 8:00pm**